



# Domestic & Industrial Heating Solutions

## ABOUT US

Power Tech Solution is a leading manufacturing company which is completely into manufacturing and delivering electric heating products nationwide. Our work does not end in providing products and solution we also offer post deliver service and maintenance to our clients which makes us different from other manufacturers in the market. Our customers are always at priority for us as they are the one who keep our business growing.

The journey started in 7th September 2012 as a small and simple proprietorship firm which is setup to serve the companies of different vertical with heating solution and contribute towards growth of nations.

**Optimizing the use of heating elements for many applications.**

- Household Appliance
- Oil & Gas
- Industrial Processes
- HVAC
- Refrigeration
- Hospitality
- Railways

## QUALITY POLICY

Being a renowned entity in the market, we manufacture high-quality products for our customers. Each and every product is quality tested in order to make sure the excellence and defect free assortment. Moreover, our quality team thoroughly checks the proper functionality of the presented products

# Self Regulating Heat Tracer

Self regulating heating cable provide the most versatility in heat trace design and applications. Constructed of a Semi-conductive heater matrix extruded between parallel bus wires, a self regulating cable adjusts its output to independently respond to ambient temperatures all along its length.

As temperatures increase, the heater's resistance increase which lower the output wattage. Conversely, as the temperature decrease, the resistance decreases and the cable produces more heat. So it is no need thermostat in some applications. It will never overheat or burnout even when wrapped by itself(overlapped). It can be cut to any length. So it is a convenient ,easy use and energy saving product.



## TECHNICAL SPECIFICATIONS

Content	Details
Output wattage at 10°C	
Braiding covering area	Over 85%
Max. maintain temp @ 10°C	65 °C
Max. exposure temp.	85°C
Min. installation temp.	-40 °C
Bending radius	5 times*cable thickness
Heat stability	Maintain Over 90% heat after 300 cycles from 10 °C to 65 °C
Resistance between bus wire and braiding	Over 100 MΩ/M with a VDC 2500 megohmmete
Voltage	230 V
Regular colour	Blue, Black or Grey
Regular size	13.5*5.5mm (Width*Thickness)



# Hot Air Blowers

## APPLICATIONS

- Incubation rooms
- Poultry farms
- Drying of engine components after washing
- Drying of match sticks
- Curd from milk Canteens
- Drying papers after printing
- Drying Paint of motor Vehicles
- Drying of Corrugation Paper after paste
- Ware Houses Etc.

## STANDARD CONTROL PANEL

- Main Switch L & or Equivalent
- Magnetic Contractor L & T or Equivalent
- Disconnect Switch Indicators
- Primary Thermostat
- Secondary Thermal Cut-out
- 4 Legs with Moving Wheels
- Factory Internal wiring with best quality copper conductor, fiber wire, lugs etc.
- Glanding / Earthing Etc.
- Supply 415V/3PH/AC/50Hz

## TESTS

- Visual Input
- High Voltage
- Insulation Resistance as per IS 302

## AVAILABLE MODELS

- Type HAB (Power Tech Air Blower Heaters)
- Type HAU (Power Tech Air Blower Heaters)

## TECHNICAL SPECIFICATIONS

- The Electric Finned air Elements, Blower, electric motor.
- All equipments are totally installed in box type unit
- The units are moving grill on front side.
- The units are wire gurads on rear side.



**HAU**



**HAB**

Cat. No	Specifications	CMH	RPM	Approx. Temp. Rise
HAB06	6.0 Kw / 415V-3PH-AC-50Hz	2450	900	06°
HAB09	9.0 Kw / 415V-3PH-AC-50Hz	2450	900	13°
HAB12	12.0 Kw / 415V-3PH-AC-50Hz	2450	900	15°
HAB18	18.0 Kw / 415V-3PH-AC-50Hz	2450	900	20°
HAB24	24 Kw / 415V-3PH-AC-50Hz	2450	900	30°
HAB30	30 Kw / 415V-3PH-AC-50Hz	2450	900	40°

Note: Custom-Built Heaters upto 600° C undertaking



# Heaters (HVAC Application)

## Finned Strip Heaters (FSH)

### APPLICATIONS

- Air-conditioning, Stoving Paints, Textiles, Leather Drying Chambers, Heating Arrangements

### TECHNICAL DATA

- Generally available from 0.5 Kw to 3.5 Kw, 240 Volts / AC / 50 Hz / Single Phase, Operates upto 400°F Spl. Heater can also be made according to specification.

### CONSTRUCTION

- Are made of Stainless Steel, GP Sheathing having the heat resistance Chrome nickel 80/20 element coil protected under the best insulation to avoid the leakage of current and to ensure the long life of the heaters. Finsns \*(3" x 1.5"), \*\* (3.5" x 1.5") which increase the output of heat to the maximum dissipation and having screw type terminals on one end for proper connection.

### INSTALLTION

- Within forced air only in horizontal position



Cat. No	Watts	Total length Inches	H to H Distance Inches
FSH 05	500	12	10.25
FSH 07	750	12	10.25
FSH 10	1000	18	16.25
FSH 15	1500	18	16.25
FSH 20	2000	29	27.25
FSH 25	2500	33.50	32.75
FSH 30	3000	33.50	32.75
FSH 30+	3000	33.50	32.75
FSH 35	3500	33.50	32.75

## Double Tube Type (DTA)

### TechnicaData

- Generally available from 1.5 Kwto 4.0 Kw, 230 Volts/ AC/50 Hz/Single Phase, Operates upto 550°F . Two L-clamps are provided on both ends of heaters for proper installation.

### Construction

- Finned Air Heaters are consisting of two tubuler mineral filled incoloy-800/stainless steel - 321 sheathed elements dia 8 mm, in one unit G.P. Finsns (3.5" x 1.5") are provided for quick dissipation of heat. It can be installed in any position as per space requirements. Its 50% wattage can be utilized if required. Its special feature - maximum wattage in minimum space.

### Installation

- Within forced air with Thermostat (Optional) in any position

Cat. No	Watts	Total length Inches	Hole to Hole Distance Inches
DTA -15	1500	12	10.25
DTA -20	2000	18	16.25
DTA -20+	2000	29	27.25
DTA -30	3000	24	22.25
DTA -30+	3000	33.5	32.75
DTA -40	4000	36	34.25



# Immersion & Chemical Segment

## POWERTECH OVER THE SIDE ALKALINE/ LEAD COVERED/ CHEMICAL IMMERSION HEATER

- FOR ALL: These Heaters are used for alkaline cleaning solution, citrus juices and very mild acid bath not corrosive to stainless steel sheet.
- FOR LCI: These heaters are recommended for nickel, copper or chrome, plating baths and sulphuric acid solution having not more than 10% concentration. Caution. These heaters are not recommended for any other acid.
- FOR CIT: These heaters are recommended for plating baths such as nickel, chrome, gold, silver including ferric and iron chloride solution bright dips and nickel containing, nitric, Phosphoric and chromic acids, permanganates, persulphates. Supply voltage 230v/1Ph./AC/50Hz



**ALI/LCI/CIT**

Sr.No.	Cat No.	Watts	Total Length	Effective Length	Cold Length
345	ALI 20	(2000)	525	335	200
346	ALI 30	(3000)	685	385	300
347	LCI 20	(2000)	625	335	200
348	LCI 30	(3000)	685	385	300
349	CIT 20	(2000)	525	335	200
350	CIT 30	(3000)	685	385	300

## INDUSTRIAL WATER IMMERSION HEATER FOR TANKS, BOILERS ETC.

Made out of copper tube brazed to brass flange and duly nickel plated.

**Caution:** all industrial water Immersion Heaters are meant for heating water only and these must be fully immersed in water before putting them in operation.

Cat. No	Watts	Volts	Brass Flange BSPP	Dept. of Immersion (mm)
IWI-20	2000	230	1 3/4"	220
IWI-20+	2000	230	1 3/4"	220
IWI-30	3000	230/415	1 3/4"	280
IWI-30+	3000	230/415	1 3/4"	220
IWI-30++	3000	230/415	2"	220
IWI-40	4000	230/415	2"	260
IWI-50	5000	230/415	2"	320
IWI-60	6000	230/415	2"	380
IWI-75	7500	230/415	2"	470
IWI-90	9000	230/415	2"	610
IWI-120	12000	230/415	2"	710



**IWI**

## INDUSTRIAL OIL IMMERSION HEATERS FOR OIL TANKS

Manufactured out of special steel tube with auto black coating brazed to M.S. Flange provided with thermostat pocket. Used for fuel oil heating, oil circulating, oil jacketing etc.

**Caution :** To be fully immersed in oil before putting in operation

Cat. No	Watts	Volts	M.S. Flange BSPP	Dept. of Immersion (mm)
OLI-20	2000	230	2 3/4"	440
OU-30	3000	230/415	2 3/4"	440
OLI-40	4000	230/415	2 3/4"	580
OU-50	5000	230/415	2 1/2"	600
OU-60	6000	230/415	2 1/2"	650
OU-90	9000	230/415	2 3/4"	650
OLI-120	12000	230/415	2 3/4"	760



**OLI**

# Tubular Heating Elements (Air)

Air heaters are manufactured out of S.S. 304/316L/321/INC sheathed tube for higher temperature upto 600 C. Each heating element is made of NiCr 80/20 resistance wires. Each element is provided with two adjustable fixing arrangements. Tube diameter varies from 8.0mm to 15mm

Fins of S.S./G.I. are provided to enlarge the heat surface.

Supply Voltage varies from 74V to 240V/AC/1PH/50-60Hz

Cat. No	Watts	Length (mm)	Width (mm)	Height (mm)
FAU / AHU-05	500	254	55	40
FAH / AHU-07	750	450	55	40
FAH / AHU-10	1000	610	55	40
FAH / AHU-10+	1000	762	55	40
FAH / AHU-15	1500	762	55	40
FAH / AHU-15+	1500	990	55	40
FAH / AHU-20	2000	990	55	40





# Heating Elements - Domestic Applications

## DESCRIPTION

Water, Geyser Heating Elements 1.5,2.0, 3.0, 4.5 Kw, at 230V/1PH/AC/50 Hz in different brass flanges with / without thermostat pockets, Heavy Copper sheathed duly Nickel Plated.

**Cup Type (Round)**



DCT 1.5Kw (601)  
 DCT 2Kw (602)  
 DCT 3Kw (603)

**Cup with Pocket (Round)**



DCT P 1.5Kw (604)  
 DCT P 2Kw (605)

**Triangle Cup**



DCT T 1.5Kw (606)  
 DCT T 2Kw (607) ECO  
 DCT T 2Kw (607)

**Triangle Cup with Pocket**



DCT TP 1.5Kw (608)  
 DCT TP 2Kw (609) ECO  
 DCT TP 2Kw (609)

**Sphere Hot Cup**



DCT SH 2Kw (610)

**Sphere Hot Cup with Pocket**



DCT SH P 2Kw (611)

**Usha Old/Big Cup**



DCT U 2Kw (612)

**Usha Old/Big Cup with Pocket**



DCT U P 2Kw (613)

**Usha Small Cup**



DCT US 2 kw (614)

**Square Flange (Alto)**



DSF A 2Kw (615)

**Square Flange (Eterno)**



DSF E 2Kw (616)

**Oval Flange (Majesty)**



DOF M 2Kw (617)

# Heating Elements - Domestic Applications

**Double Tube (Cup Round)**



DTC CR 2Kw (618)

**Double Tube (Cup Triangle)**



DTC CT 2Kw (619)

**Brass Flange with Thread**



DCW 1-1/4" 1.5Kw (624)  
DCW 1" 2Kw (625)  
DCW 1-1/8" 1.5Kw  
DCW 1-1/4" 2Kw (626)

**Jhonson Flange/Brass Flange  
1 inch thread with/without Pocket**



DIH J 3Kw (631)  
DIH JP 3Kw (632)

**Nipples /Cup**



DIH N 3Kw (633)      DIH C 3Kw (634)

**Racold New Type**



Solarise (622)

**Bajaj Eco/Usha**



(620) Depth 9"

**Washing Machine**



DWM 1.5Kw (635)  
DWM 2Kw (636)

**Kettle Element with  
Auto Cut Flange**



DKA 1.5Kw (638)  
DKA 2Kw (639)

**Kettle Element with Duct/  
Non Auto/Black Cup flange**



DKN 1.5Kw (642)  
DKN 2Kw (643)

**Double Tube Heater with  
Flange Thread**



DTH 1.25" 2Kw (649)  
DTH 1.5Kw 2Kw (650)  
DTH 1.25" 3Kw (651)  
DTH 1.5Kw 3Kw (652)

**Horizontal Element**



DHZ 2Kw (653)

**Racold (MTS Geyser)**



(623)

**Bajaj Bend**



(620)

**Bajaj Clip Type**



(621)

## Defrost Heaters Heat Tracer

### APPLICATION FIELD

- Cold Storage doors
- Drain Pipes Etc.

### TECHNICAL DATA

- Available in Standard lengths of 3,5,6,11 & 25 Mtr.
- 110, 230V / AC / 50 Hz

### TYPE

- Single Side Connection 45 W / mtr.
- Double Side Connection 25 W / mtr.



DH

### CONSTRUCTION

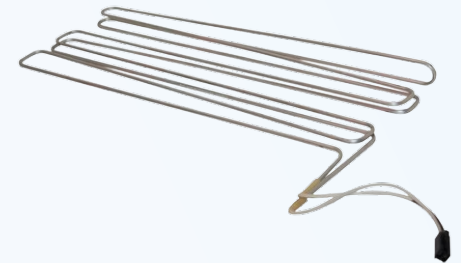
The element of Nickle 80/20 is wrapped on fiber thread then insulated by Teflon coating and then braided by stainless steel wire

## Tubular Type Defrost Heaters

For Trays, cooling & condensing coils, refrigerators, Deep Freezers Etc. Both ends of heaters are sealed with silicon leads for connection available in different shapes, watts, & Sheathing.

### WORKING CONDITION

- Max. Rating voltage 250V / 50-60 Hz, Relevant Humidity < 90%
- Power Tolerance : < 5%
- Insulation Resistance (Immersion, Under Normal Temp) : > 100 mA
- Insulation Strength (Immersion , Under Normal Temp) : 1500V 1 min no checkmate and flash
- Leaking Electric Current (Immersion, Under Normal Temp) : < 0.02 mA / meter
- Terminal Connecting Strength : 58.5N 1 min no abnormality
- Tube Diameter keeping Rate When Bended : > 85%
- Overload Test : 1.15 times of rated voltage
- Tube Size : Diameter 4.5 or 6.35 mm



DTH

## Industrial Water Immersion Heaters For Hot Water Generators

Elements are made from INC / Stainless Steel / Copper Sheathing. Brazed with M.S. Flanges suitable for meeting Flange. Elements are designed for 70 watts / sq inch maximum. Available in different wattage from 5 kw to 300 Kw – 230/440V / AC / 50 Hz.





## Drain Pipe Defrost Heaters (Silicone Heater)

### APPLICATIONS

- Refrigerators
- Warehouses
- Cold stores
- Road Defrosting
- Deep Freezers

### CHARACTERISTICS

- Complete with water proof design
- Double layer insulation
- Mould pressing knot, flexibility
- Silicon rubber insulation applicable scope : 600C to 2000C



DPDH

### CHARACTERISTICS & FEATURES

- Standard sizes are available in 1mtr, 2mtr, 3mtr, 4mtr & 5mtr etc.
- The whole body uses silicon rubber as the insulation heat conduction material (including power cord), and work environment temperature is 600 to 2000 C
- Good Heat conducting Property
- Generate heat energy by passing to directly conduct heat, high thermal efficiency, capable of heating in short time to achieve the effect.
- Reliable Electrical property
- Firm structure, flexibility and easy bending
- Combine the whole cooling end section, no binding point. Rational structure, easy installation.
- Strong design ability
- Heating length, lead wire length, rated voltage and power are determined by users.

## Parallel Constant Power Wire Heaters

### APPLICATIONS FIELD

- Ground Heating of Buildings
- Refrigerators and warehouses
- Chute Heating
- Gutter and roof defrosting



DHF

### CHARACTERISTICS & FEATURES

The whole body uses silicon rubber as the insulation heat conduction material (including power cord), and work environment temperature is 600 to 2000 C

- Good Heat conducting Property
- Generate heat energy by passing to directly conduct heat, high thermal efficiency, capable of heating in short time to achieve the effect.
- Reliable Electrical property
- Firm structure, flexibility and easy bending
- Combine the whole cooling end section, no binding point. Rational structure, easy installation.
- Strong design ability
- Heating length, lead wire length, rated voltage and power are determined by users.
- Other test to ensure quality

### PRODUCT STRUCTURE

- Heating Wires are two tinned copper wires with section of 75 ㎡.
- Isolated layer is made of silicon rubber by extrusion
- High strength alloy wire spiral and silicon rubber surface are the heating centre
- Airtight cladding made by extrusion method

### PRODUCT SPECIFICATIONS

The voltage 36V-240V is determined by the user.

- 25 W / m, Withstand voltage AC 3500V, use longest limit 65 mtr.
- 40 W / m, Withstand voltage AC 3500V, use longest limit 50 mtr.
- 50 W / m, Withstand voltage AC 3500V, use longest limit 44 mtr.

# Power Tech Air-conditioning

## COMPRESSOR CRANKCASE HEATERS

### FUNCTION & INTRODUCTION

- When the air conditioner is used under severe cold condition, driver engine oil inside can condense, and affect the normal starting of the unit. The heating belt can promote to thermalize engine oil, and help the unit to be started normally.
- It can protect compressor from being damaged in the starting in cold winter, and prolongs the service life. In cold winter, engine oil condenses, hard friction can generate in starting, and may cause damages.

### APPLICATION RANGE

- Cabinet Refrigeration units / low Temp. Refrigeration Units.
- Wall - Mounted Air conditioners
- Window Air conditioners

### TECHNICAL PARAMETERS

- Continuous max Use Temperature : 250 Deg C, Minimum Ambient Temperature : 40 DEG C below Zero.
- Max Surface Power Density : 2W / cm<sup>2</sup>
- Min Making Thickness : 0.5 mm

### TESTS

- Voltage : 230V / 1 PH / AC / 50 Hz
- High Voltage : Withstand >5KV
- Insulation Resistance : > 10M-2
- Power Input:+ 5%
- Other Test to ensure quality



CCH

### CHARACTERISTICS & FEATURES (CCH)

- Random bending and winding according to the demand of to be heated component, small occupied space and volume.
- Simple and fast installation mode
- Sleeve silicon rubber insulator on heating body
- Tin copper braided layer can prevent machine from being damaged, and conduct electric power to the ground
- Moisture resistance entirely | Customize according to the required length
- Core cold tail end.

# Power Tech Crank Case Heaters

## FOR A/C COMPRESSORS

Are made from Brass/ Stainless Steel/ Special Steel and used to heat oil in various makes of following Air Conditioning Compressors. Kirlaskar, Frick, York, Voltas, K.G. Khosla, Carrier Trane, Copeland Etc. Some of Them are having flanges for fixing in Compressors. Some heaters have provision for Thermostat and operated at 230V. AC 50Hz.



Cat. No	Watts	Cat. No	Watts	Cat. No	Watts
CC-07	75	ES-10	100	KC-10	100
CC-10	100	ES-20	200	KC-20	200
CC-20	200	ES-30	300	FC-50	500

# Tube Axial Fan

## APPLICATIONS

- Ventilation for warehouses/Shopping malls/ Underground /Multi level / Basement car parking /Multi occupancy housing /Apartments.
- Emergency smoke extraction.
- High temperature Heat extraction.
- Staircase pressurization.
- Industrial/commercial ventilation for Indoor/ outdoor application.



## FEATURES

- Drum housing is made of heavy gauge all welded steel.
- Fan blades are made of non-sparking cast aluminum
- Drum features angle iron flanges welded on each end.
- Motor is Corrosion resistance ,High durability & Full load speed and breakaway torque.
- Motor available in single & three phase .
- Stand / Bird grill /louver are extra available on special request .
- Size available in inches- 12,14,16,20,22,24,28,30,32,36,40,44,48,54,60
- CFM available from 100 to 1,25,000
- For static pressure 0.25 upto 50mm
- Daspass appliances TUBE AXIAL FANS are perfectly suitable for Indoor & outdoor installation and operate in emergency & normal circumstances. "Power Tech Solution" impeller is specially designed for high temperature heat extraction and emergency smoke exhaust .

Catalogue / Model no.	Sweep Dia MM/Inch	Motor (HP)	Motor (RPM)	Max. Air Delivery 6 Blades (CMH)	Max. Air Delivery 6 Blades (CFM)	Max. Air Delivery 8 Blades (CMH)	Max. Air Delivery 8 Blades (CFM)	Static Pressure
PTF/290/12"/2880	290/12"	0.5	2880	2550	1500	3050	1800	15mm
PTF/ 290 /12"/1440	290/12"	0.5	1440	1360	800	1700	1000	10mm
PTF/400/16"/2880	400/16"	0.5	2880	3570	2100	4250	2500	10mm
PTF/ 400 / 16"/1440	400/16"	0.5	1440	2380	1400	3060	1800	20mm
PTF/450 /18"/2880	450/18"	0.75	2880	5100	3000	6800	4000	20mm
PTF/450 /18"/1440	450/18"	0.75	1440	4080	2400	4760	2800	15mm
PTF/ 500 /20" / 2880	500 / 20"	1	2880	8500	5000	9350	5500	10mm
PTF/500 /20"/1440	500 / 20"	0.5	1440	5600	3300	6800	4000	18mm
PTF/ 590 /24" 1440	590 / 24"	1	1440	9350	5500	11050	6500	23mm
PTF / 590 /24" / 2880	590 / 24"	1.5	2880	11900	7000	13600	8000	16mm
PTF/690 /28" 1440	690 / 28"	2	1440	13600	8000	15300	9000	25mm
PTF/ 690 /28" / 960	690 / 28"	1.5	960	11900	7000	13600	8000	20mm
PTF/750 /30" 1440	750 / 30"	3	1440	17000	10000	19540	11500	25mm
PTF/ 750 /30" / 960	750 / 30"	3	960	15300	9000	17840	10500	30mm
PTF/800/32" 11440	800 / 32"	3	1440	20400	12000	23800	14000	25mm
PTF/ 800/32" 960	800 / 32"	3	960	17850	10500	22100	13000	25mm
PTF/900 /36" 1440	900 / 36"	5	1440	25500	15000	30600	18000	30mm
PTF/ 900 /36" / 960	900 / 36"	5	960	23800	14000	28050	16500*	30mm
PTF/1000 /40" 1440	1000/40"	5	1440	34000	20000	42480	25000	30mm
PTF/1000 /40" 960	1000/40"	5	960	30600	18000	38230	22500	30mm
PTF/1250/48" 1440	1250/48"	7.5	1440	51000	30000	59500	35000	35mm
PTF/1250 /48" / 960 A	1250/48"	7.5	960	42500	25000	42500	25000	35mm
PTF/1250/48" / 960 B	1250/48"	10	960	54400	32000	54400	32000	40mm



# CIRCULAR INLINE FAN

## APPLICATIONS

- For Blowing air, exhaust, circulate, filter the air in residential / commercial & Industrial appliances such as toilets, bathrooms in homes, Hotels, apartments, office, gymnasium, Malls, store rooms and most of polluted places.
- Control odor, fume, gas and temperature of indoor and hydroponic garden
- Providing fresh air/ air cleaning .
- Workshop.



## FEATURES

- Power Tech Solution circulator fans function in long duct runs & cope up with high pressure without compromising with sound level .
- RPM can be controlled by speed controllers /regulators ( frequency variation).
- Suitable for humid/coastal environment & moisture resistant .
- Fans are with single phase motor with backward curved impeller & thermal protection.
- Fans should not be strictly used in dusty area/kitchen / dusty /oily particles .
- Material: Steel
- Direction : Clockwise , see on motor
- Insulation Class : F
- Mode of operation : Continuous
- Motor protection : Thermal overload
- Protection : IP44
- Mounting position: Any
- Ball bearing : Maintenance free
- Perm. amb. Temp : -20°c to + 60

Catalogue / Model no.	Watts	Current (Amp)	Volts	Freq (Hz)	Air flow (M3/h) max	Air flow CFM max	Speed (RPM)	Sound pressure db (A)	Curve	Permanent ambient temp (Centigrade)	Outer Dia MM (A)	Length MM (B)	Pipe dia mm (C)
PTCIF 100 B	60	0.26	230	50	252	150	2512	55	B - 20 to + 60	243	194	100	
PTCIF 100 A	30	0.13	230	50	200	120	1821	22	A - 20 to + 60	243	194	100	
PTCIF 125 B	70	0.30	230	50	350	210	2373	58	B - 20 to + 60	243	195	125	
PTCIF 125 A	30	0.14	230	50	252	150	1748	51	A - 20 to + 60	243	195	125	
PTCIF 150 B	90	0.43	230	50	575	340	2565	57	B - 20 to + 60	333	222	150	
PTCIF 150 A	50	0.22	230	50	400	235	2504	54	A - 20 to + 60	333	222	150	
PTCIF 160 B	120	0.60	230	50	670	400	2572	59	B - 20 to + 60	333	222	160	
PTCIF 160 A	70	0.30	230	50	446	260	2546	55	A - 20 to + 60	333	222	160	
PTCIF 200 B	140	0.65	230	50	885	520	2578	60	B - 20 to + 60	333	223	200	
PTCIF 200 A	100	0.45	230	50	600	350	2230	57	A - 20 to + 60	333	223	200	
PTCIF 250 B	170	0.80	230	50	1066	630	2524	58	B - 20 to + 60	333	206	250	
PTCIF 315 B	230	1.10	230	50	1700	1000	2516	65	B - 20 to + 60	401	230	315	
PTCIF 315 A	160	0.71	230	50	1250	740	2570	62	A - 20 to + 60	401	230	315	

# AXIAL FLOW FAN

## APPLICATIONS

- Generator
- Cold stores
- Air compressor
- Lifts/Elevators
- Diesel engines

## FEATURES

- External rotor ,motor
- Heavy duty copper winded , varnished & oven baked motor
- Permanent lubricated bearing
- Class B insulation
- Tropicalization treatment
- Voltage frequency  $\pm 10\%$
- Best air performance under static pressure
- Unique fastening system with improved rigidity
- Maintenance free operation
- Riveted impeller



## TECHNICAL SPECIFICATIONS

Axial fan Cat No.	Fan model Type	Impeller Dia	Phase	Speed RPM	Volt- age	Current Input (Watt)	Net Weight (Kg.)	Noise Level DB	Air Volume CMH	CFM	
FAD-SP 250	Suction type	250mm/10"	Single	1370	230	0.23	50	3	55	860	418
FAD-SP 300	Suction type	300mm/12"	Single	1370	230	0.38	75	3.3	54	1650	1006
FAD-SP 300	Suction type	300mm/12"	Single	2400	230	0.55	125	3.3	58	1800	1590
FAD-SP 350	Suction type	350mm/14"	Single	1370	230	0.65	135	5	58	2260	1330
FAD-TP 350	Suction type	350mm/14"	Three	1370	415	0.39	140	5	58	2260	1330
FAD-SP 400	Suction type	400mm/16"	Single	1370	230	0.84	180	6	60	3500	2254
FAD-TP 400	Suction type	400mm/16"	Three	1370	415	0.48	180	6	60	3500	2254
FAD-SP 450	Suction type	450mm/18"	Single	1370	230	1.2	250	7.5	62	4500	2707
FAD-TP 450	Suction type	450mm/18"	Three	1370	415	0.62	250	7.5	62	4500	2802
FAD-TP 600	Suction type	600mm/24"	Three	1370	415	1.6	800	14	73	9500	6380

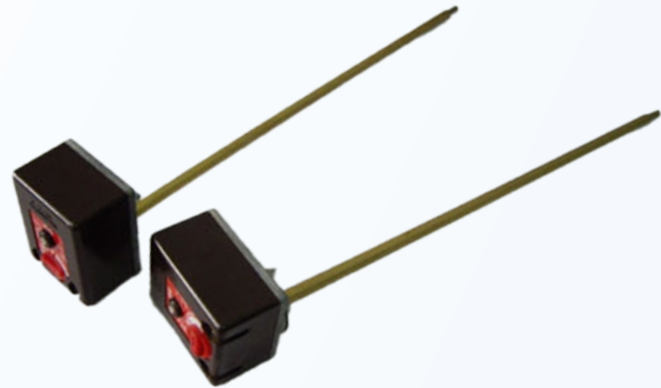




## THERMOSTATS/ THERMAL CUTOUTS

### APPLICATIONS

Thermostats are ideal for temperature control of Electric Geysers, Boilers, Ovens, Panel Boards, Air Handling Units Etc.



### CONSTRUCTION

- The micro gap switch assembly is mounted on a heat resistance base, with rigid brass pillar terminals. Heavy duty contacts are provided for long trouble free life. A thermosetting cover with clear and precise graduations is provided along with a setting knob. Thermostat can be fixed in any position.
- These are available in standard stem lengths of 7" (175 mm) / 230 Volts and 11" (275 mm) / 230 Volts, 18" (457 mm) / 230 Volts, on the operational load of 20 amps. Also available in 110 V & 415V

### PRINCIPLE OF OPERATION

With temp rise, the principal of differential expansion of brass tube and a Nickel / Iron (Invar) Rod is used to actuate a highly accurate snap action micro gap switch located in the head which makes it keep the temperature constant within the differential i.e. A single pole, single throw, normally closed circuit breaks (opens) on rise of temperature.

## COMBISTATS

### DESCRIPTION

Combistat with single pole stem control and double pole safety limiter

### FEATURES

Combistat control and safety function Patented MFS technology or traditional bimetal for independent non self resetting safety option Direct plug-in to heating element to reduce wiring and mounting costs Tamper proof housing Factory pre-set fixed temperature, OEM adjustable or end-user adjustable temperature Multiple control knob options connection for signal lamp.

### PRINCIPLE OF OPERATION

The differential expansion of the sensing element causes the opening of a snap-action switch in the thermostat head. In case of abnormal temperature rise, the patented MFS technology in the stem or traditional bimetal ensures double pole safety. The limiter is manually resettable.





# Power Tech Duct Heaters

## DESCRIPTION

Our well established enterprise is engaged in offering an all-encompassing spectrum of Air Duct Heater. This heater finds usage suitability in non-pressurized air-heating system. This heater is obtainable in various specifications as per the client's needs. Offered heater is examined by our quality experts for make certain its flawlessness. Customers can avail this heater from us at nominal rates.

## FEATURES

- Constructed as standard units
- Tailored to suit Customer's Specific requirement
- Suitable for use in relative humidity upto 90%.
- Designed for operation in temperature conditions upto 950 F

## APPLICATION RANGE

Air-conditioning (AHU – FCU), High Temperature Batteries, Load Bank of Generators, Industrial Drying Ovens, Heat Treatment, Offices, Buildings, Institutes, Retail Stores, and Much More.

## AVAILABLE TYPES

- Unitary Commercial Industrial Heaters
- Custom – Built (CB) Duct Heaters
- Stock – Line (SL) Duct Heaters
- Remote Panel (RP) Duct Heaters
- Flange Mount (FM) Duct Heaters
- Slip – Mount (SM) Duct Heaters
- Round Mount (RM) Duct Heaters
- Bottom Mount (BM) Duct Heaters
- Double Deckkar Mount (DDM) Duct Heaters

## CHARACTERISTICS

- Capacity-3Kw to 1000 Kw
- Operating Voltage 110, 220, 230, 415,
- 600 (1-3 PH) AC/50-60 Hz

## CONSTRUCTION

Incoloy – 800, Stainless Steel – 321 Sheathing of tubular elements with / without fins. U/M shape elements are mounted on a detachable terminal plate using galvanized retainers. A mounting flange permits attachment to the duct work. Individual elements are easily replaced or interchanged. Where the application calls for a higher temperature, the case is constructed from heat resisting steels. A thermal Cut-out fitted for protection against overheating. Safety Auto Thermostat Cut-off required temp. Control, contractor and fan interlock device, SSR, SCR, BMS Compatible are available as optional extras, M / Explosion resistant covers (Flame Proof) and element are also available. Zero Clearance Construction / selected elements by calculated wire temperature method.

## OPEN COIL CONSTRUCTION :

Heating Element Shall be Open coil 80% nickel 20% chrome type resistance wire shall be machine crimped into stainless steel. Terminals are supported by ceramic bushings staked into supporting brackets.

## EXPLOSION / HAZARDOUS AREAS : –

Include use with roof top air-handling unit, in wash down areas such as food processing plants, wet & humid spaces near indoor swimming pools, Sub-marine or Casino boat applications



## Power Tech Door Heaters

### PRODUCT DESCRIPTION

With firm commitment to quality, Power Tech Solution provides a wide assortment of Door Heaters. These door heaters comes with different capacity in terms of wattage. The given door heaters are precisely inspected on several parameters so as to dispatch a flawless range. These door heaters are developed from high grade material & leading technologies in compliance with the international parameters.



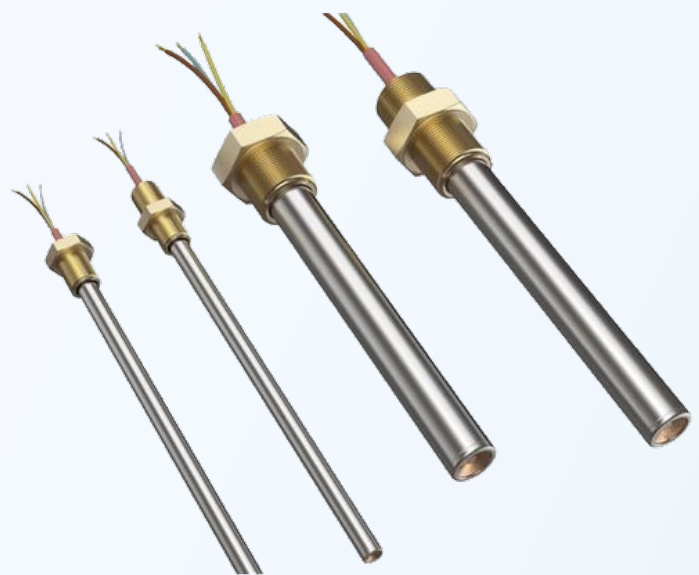
### FEATURES

- Precisely designed
- Comes with self regulating tapes
- Low maintenance cost

## Cartridge Heaters

### PRODUCT DESCRIPTION

Cartridge Heaters is used in different commercial ventures where restricted hotness is required for constrained space. Electric Cartridge Heater is manufactured from ideal quality metal, S.S. also Lincoln sheathing in ordinary and "D" structure. Smaller Cartridge Heater could be benefited in low and also in high-density wattage. They are unique in term of value and are accessible at pocket amicable cost. Considered one of the famous producers and suppliers, we are included in offering an extensive variety of Cartridge Heaters.



### FEATURES

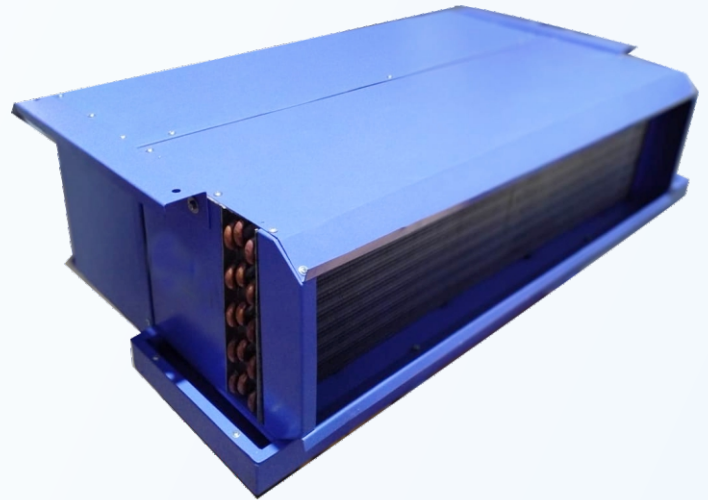
- Strong construction
- Long functional life
- High efficiency
- Less maintenance
- Excellent heat transfer

# Fan Coil Unit

## PRODUCT DESCRIPTION

We are among the industry leaders, engaged in offering Fan Coil Unit to our esteemed customers. The offered units are designed by expert professionals with the aid of high grade materials and cutting edge technology. These systems are compact in size and are made available in single skin or double skin construction. Offered units are made available at competitive prices.

With phenomenal market understanding, we are able to introduce an extensive range of Fan Coil Unit. We have expert team of engineers who make sure that every air shower, filter, control panel, pass box, buffers, sensors and other concerned equipment is installed and placed precisely at the position where it



## FEATURES

- Made of steel of superior quality to offer rugged construction
- Long life
- Quality aluminium fins and copper tubes are used for efficient cooling and heating
- Single phased motors are used for noise reduction of the centrifugal blades





Address: 2nd Floor, 36/2, Kh. No. 1001- 1002, Gali No. 4, Block RST,  
Prem Nagar-II, North West Zone, (Delhi - 110086)

Call: +91 92058 27303

Website: [www.powertechheaters.in](http://www.powertechheaters.in) | Email: [powertechsolution.sk@gmail.com](mailto:powertechsolution.sk@gmail.com)